

FRAME 2 LAYOUT
 1/4" = 1'-0"
 REFER FRAME 1 FOR DIMENSIONS & NOTES

JOINT. 25

JOINT. 20

JOINT. 27

JOINT. 22

JOINT. 29

JOINT. 14

JOINT. 24

JOINT. 27

JOINT. 30

JOINT. 30

JOINT. 20

JOINT. 25

JOINT. 12

JOINT. 13

JOINT. 8

JOINT. 3

1x12 CONTINUES THROUGH

1x6

JOINT. 20

JOINT. 12

JOINT. 10

JOINT. 10

JOINT. 10

JOINT. 10

JOINT. 6

JOINT. 5

JOINT. 4

JOINT. 5

JOINT. 6

JOINT. 2

JOINT. 2

JOINT. 2

JOINT. 2

JOINT. 1

JOINT. 1

JOINT. 7

JOINT. 7

JOINT. 9

JOINT. 9

JOINT. 17

JOINT. 17

JOINT. 19

JOINT. 19

JOINT. 22

JOINT. 22

JOINT. 29

JOINT. 29

JOINT. 31

JOINT. 31

JOINT. 31

JOINT. 31

JOINT. 32

JOINT. 32

JOINT. 24

JOINT. 24

JOINT. 23

JOINT. 23

JOINT. 22

JOINT. 22

JOINT. 21

JOINT. 21

JOINT. 20

JOINT. 20

JOINT. 19

JOINT. 19

JOINT. 18

JOINT. 18

JOINT. 17

JOINT. 17

JOINT. 16

JOINT. 16

JOINT. 15

JOINT. 15

JOINT. 14

JOINT. 14

JOINT. 13

JOINT. 13

JOINT. 12

JOINT. 12

JOINT. 11

JOINT. 11

JOINT. 10

JOINT. 10

JOINT. 9

JOINT. 9

JOINT. 8

JOINT. 8

JOINT. 7

JOINT. 7

JOINT. 6

JOINT. 6

JOINT. 5

JOINT. 5

JOINT. 4

JOINT. 4

JOINT. 3

JOINT. 3

JOINT. 2

JOINT. 2

JOINT. 1

JOINT. 1

JOINT. 15

JOINT. 15

JOINT. 16

JOINT. 16

JOINT. 17

JOINT. 17

JOINT. 18

JOINT. 18

JOINT. 19

JOINT. 19

JOINT. 20

JOINT. 20

JOINT. 21

JOINT. 21

JOINT. 22

JOINT. 22

JOINT. 23

JOINT. 23

JOINT. 24

JOINT. 24

JOINT. 25

JOINT. 25

JOINT. 26

JOINT. 26

JOINT. 27

JOINT. 27

JOINT. 28

JOINT. 28

JOINT. 29

JOINT. 29

JOINT. 30

JOINT. 30

JOINT. 31

JOINT. 31

JOINT. 32

JOINT. 32

JOINT. 16

JOINT. 16

JOINT. 17

JOINT. 17

JOINT. 18

JOINT. 18

JOINT. 19

JOINT. 19

JOINT. 20

JOINT. 20

JOINT. 21

JOINT. 21

JOINT. 22

JOINT. 22

JOINT. 23

JOINT. 23

JOINT. 24

JOINT. 24

JOINT. 25

JOINT. 25

JOINT. 26

JOINT. 26

JOINT. 27

JOINT. 27

JOINT. 28

JOINT. 28

JOINT. 29

JOINT. 29

JOINT. 30

JOINT. 30

JOINT. 31

JOINT. 31

JOINT. 32

JOINT. 32

JOINT. 17

JOINT. 17

JOINT. 18

JOINT. 18

JOINT. 19

JOINT. 19

JOINT. 20

JOINT. 20

JOINT. 21

JOINT. 21

JOINT. 22

JOINT. 22

JOINT. 23

JOINT. 23

JOINT. 24

JOINT. 24

JOINT. 25

JOINT. 25

JOINT. 26

JOINT. 26

JOINT. 27

JOINT. 27

JOINT. 28

JOINT. 28

JOINT. 29

JOINT. 29

JOINT. 30

JOINT. 30

JOINT. 31

JOINT. 31

JOINT. 32

JOINT. 32

JOINT. 18

JOINT. 18

JOINT. 19

JOINT. 19

JOINT. 20

JOINT. 20

JOINT. 21

JOINT. 21

JOINT. 22

JOINT. 22

JOINT. 23

JOINT. 23

JOINT. 24

JOINT. 24

JOINT. 25

JOINT. 25

JOINT. 26

JOINT. 26

JOINT. 27

JOINT. 27

JOINT. 28

JOINT. 28

JOINT. 29

JOINT. 29

JOINT. 30

JOINT. 30

JOINT. 31

JOINT. 31

JOINT. 32

JOINT. 32

JOINT. 19

JOINT. 19

JOINT. 20

JOINT. 20

JOINT. 21

JOINT. 21

JOINT. 22

JOINT. 22

JOINT. 23

JOINT. 23

JOINT. 24

JOINT. 24

JOINT. 25

JOINT. 25

JOINT. 26

JOINT. 26

JOINT. 27

JOINT. 27

JOINT. 28

JOINT. 28

JOINT. 29

JOINT. 29

JOINT. 30

JOINT. 30

JOINT. 31

JOINT. 31

JOINT. 32

JOINT. 32

JOINT. 20

JOINT. 20

JOINT. 21

JOINT. 21

JOINT. 22

JOINT. 22

JOINT. 23

JOINT. 23

JOINT. 24

JOINT. 24

JOINT. 25

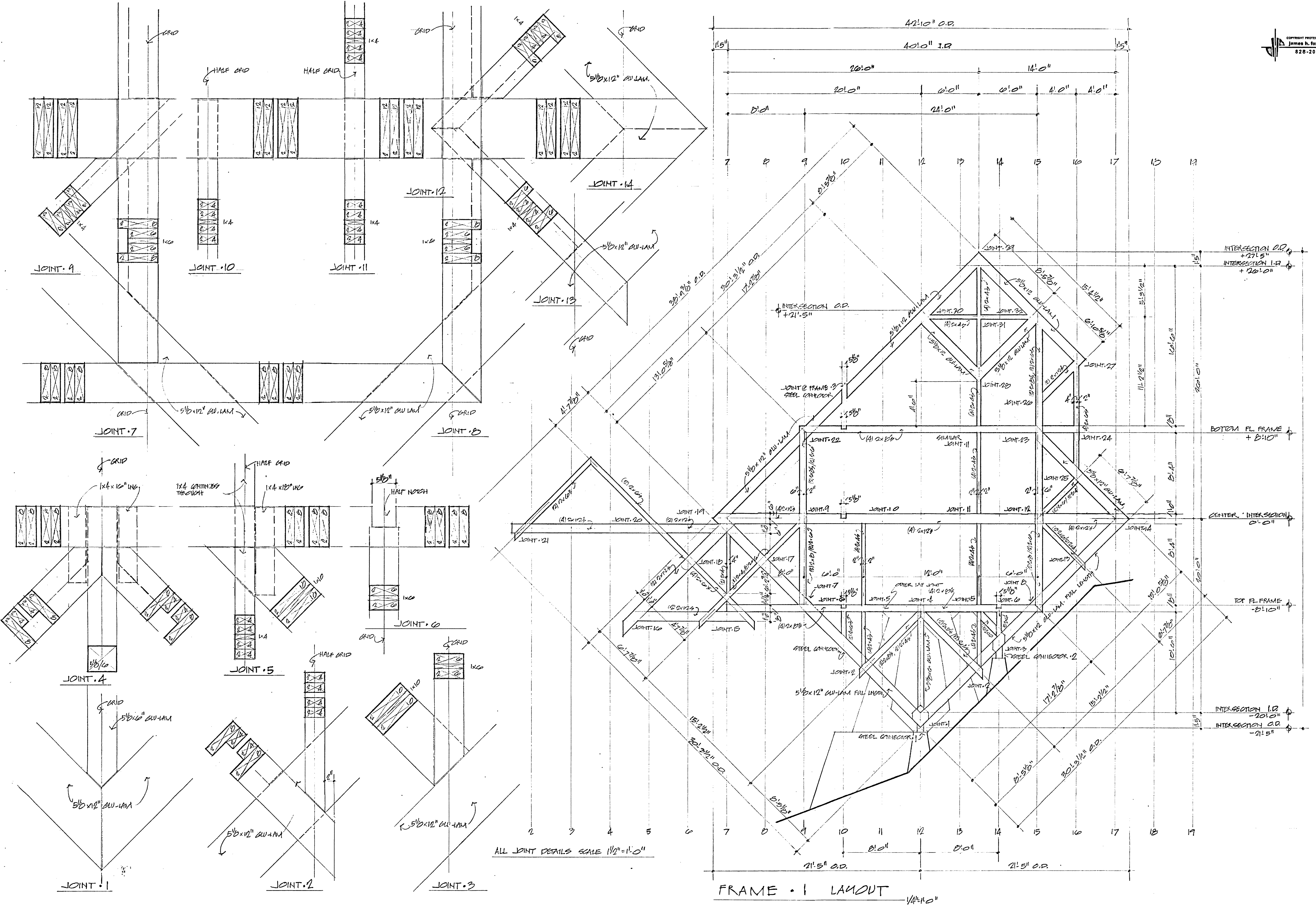
JOINT. 25

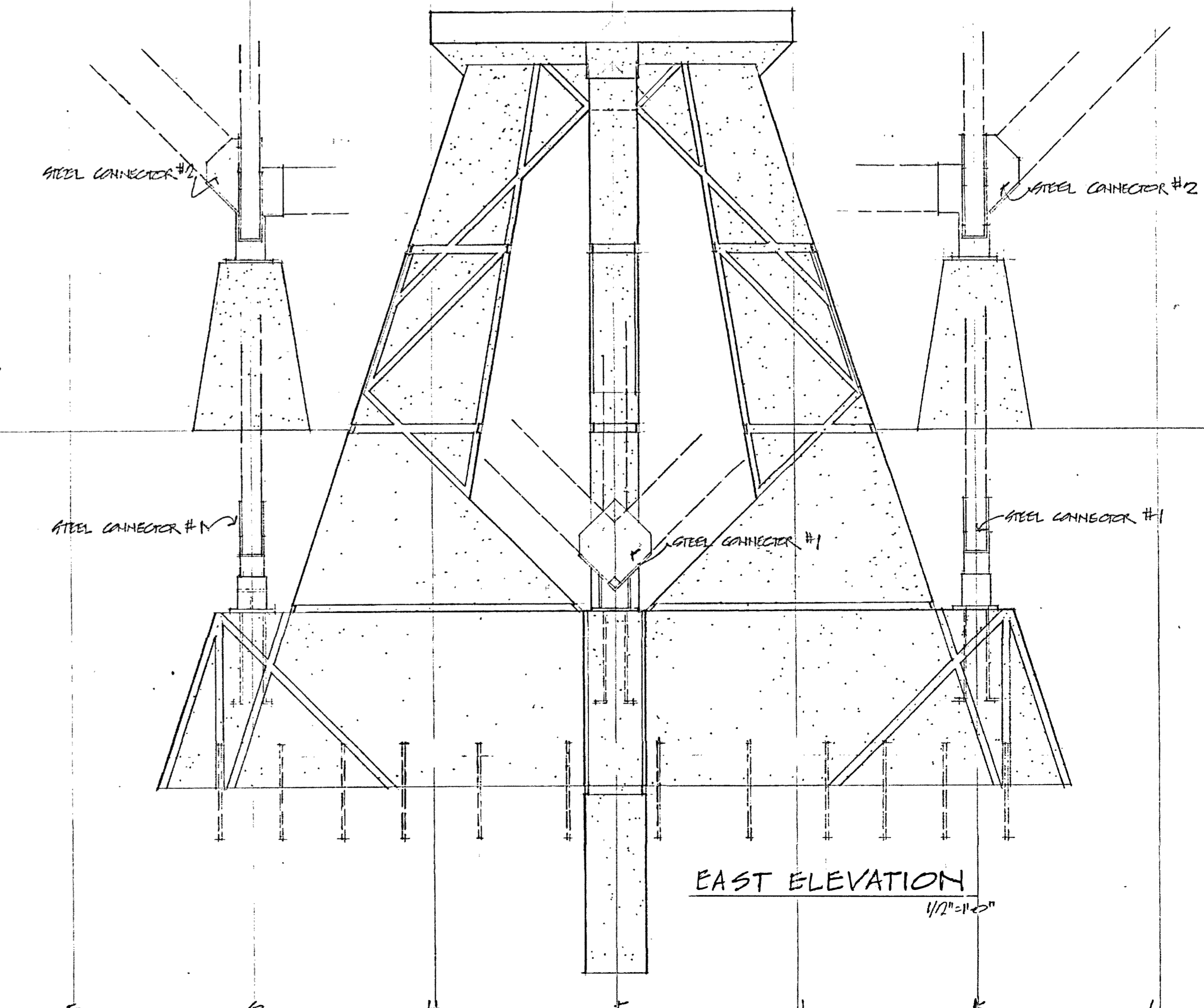
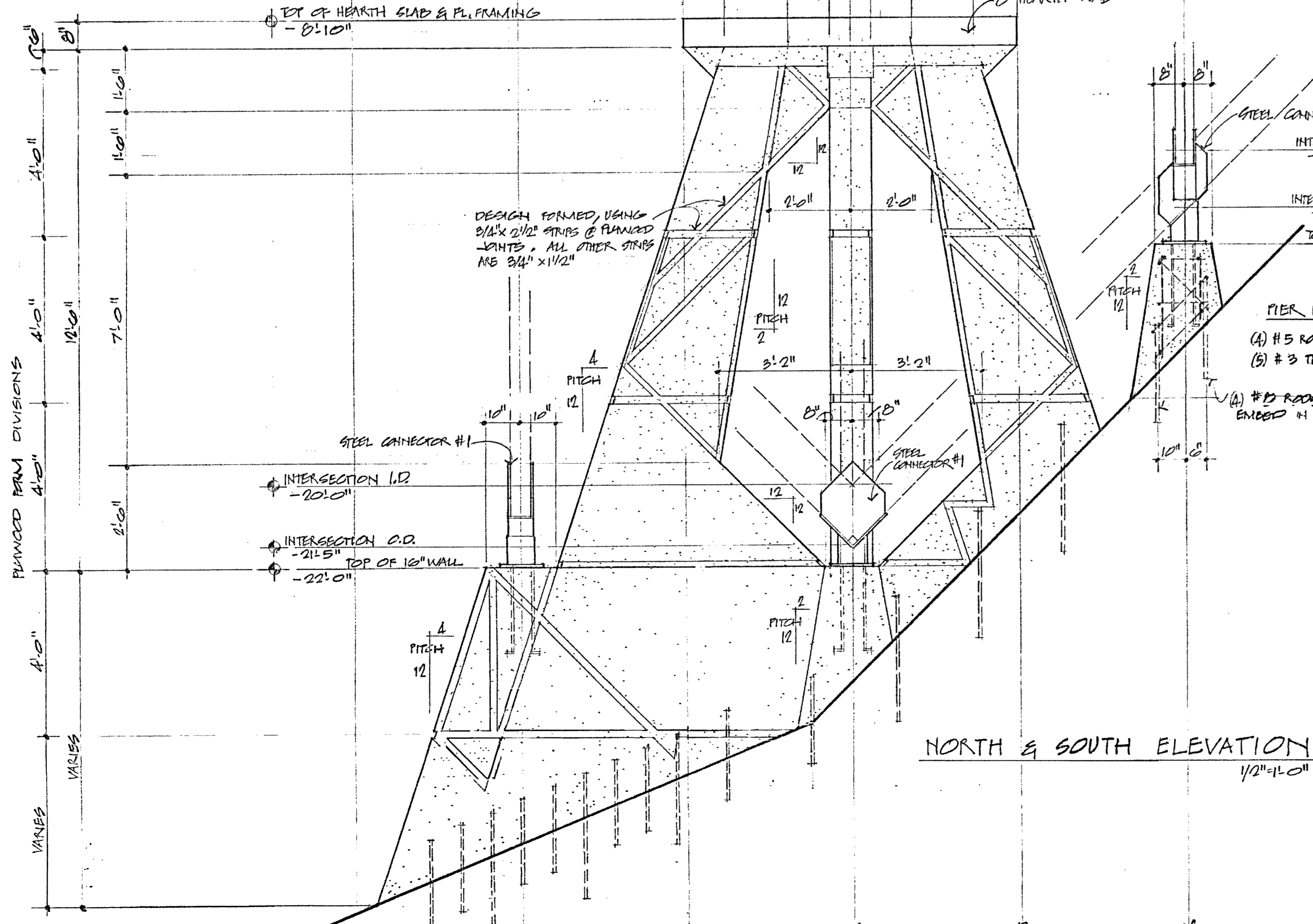
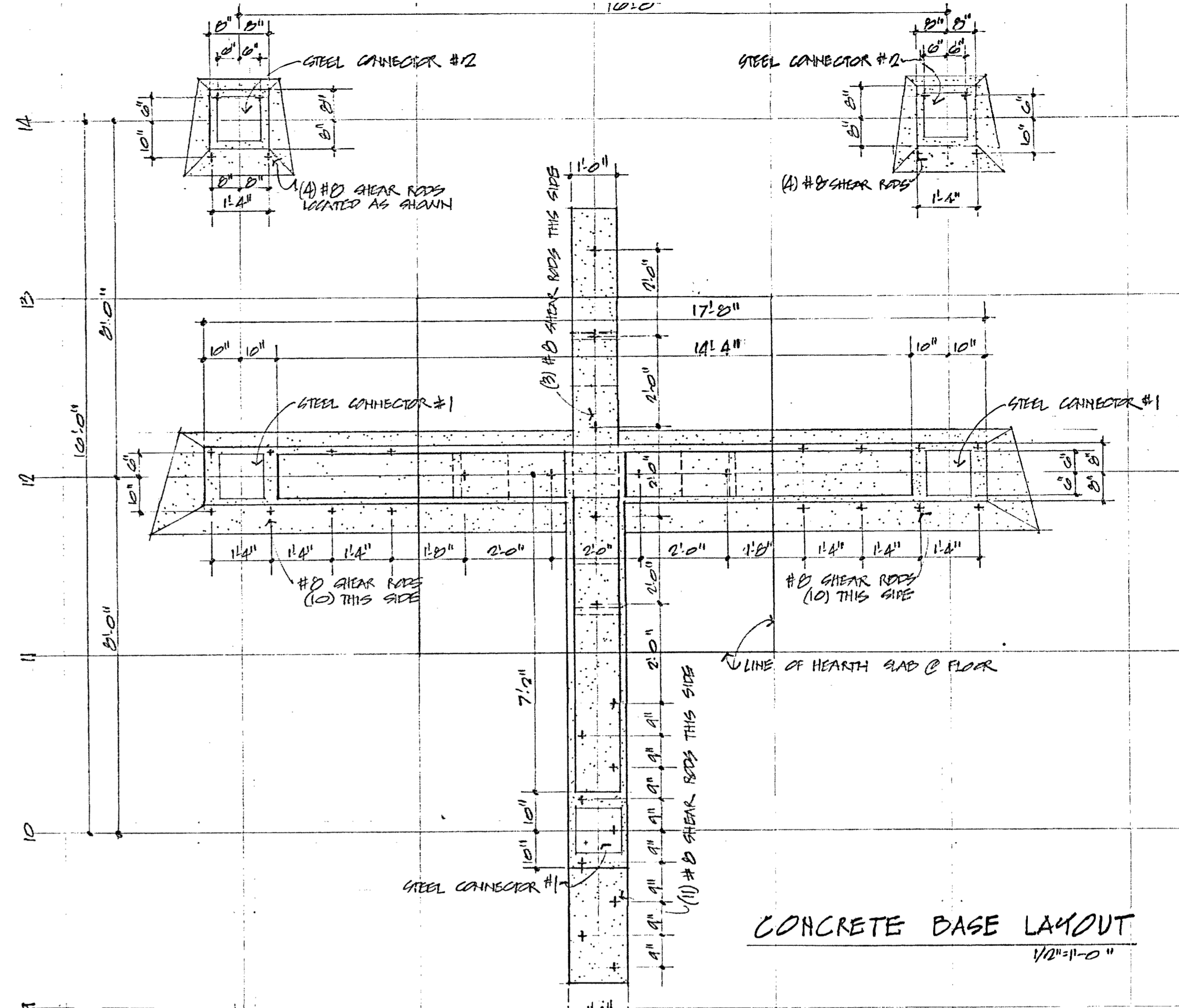
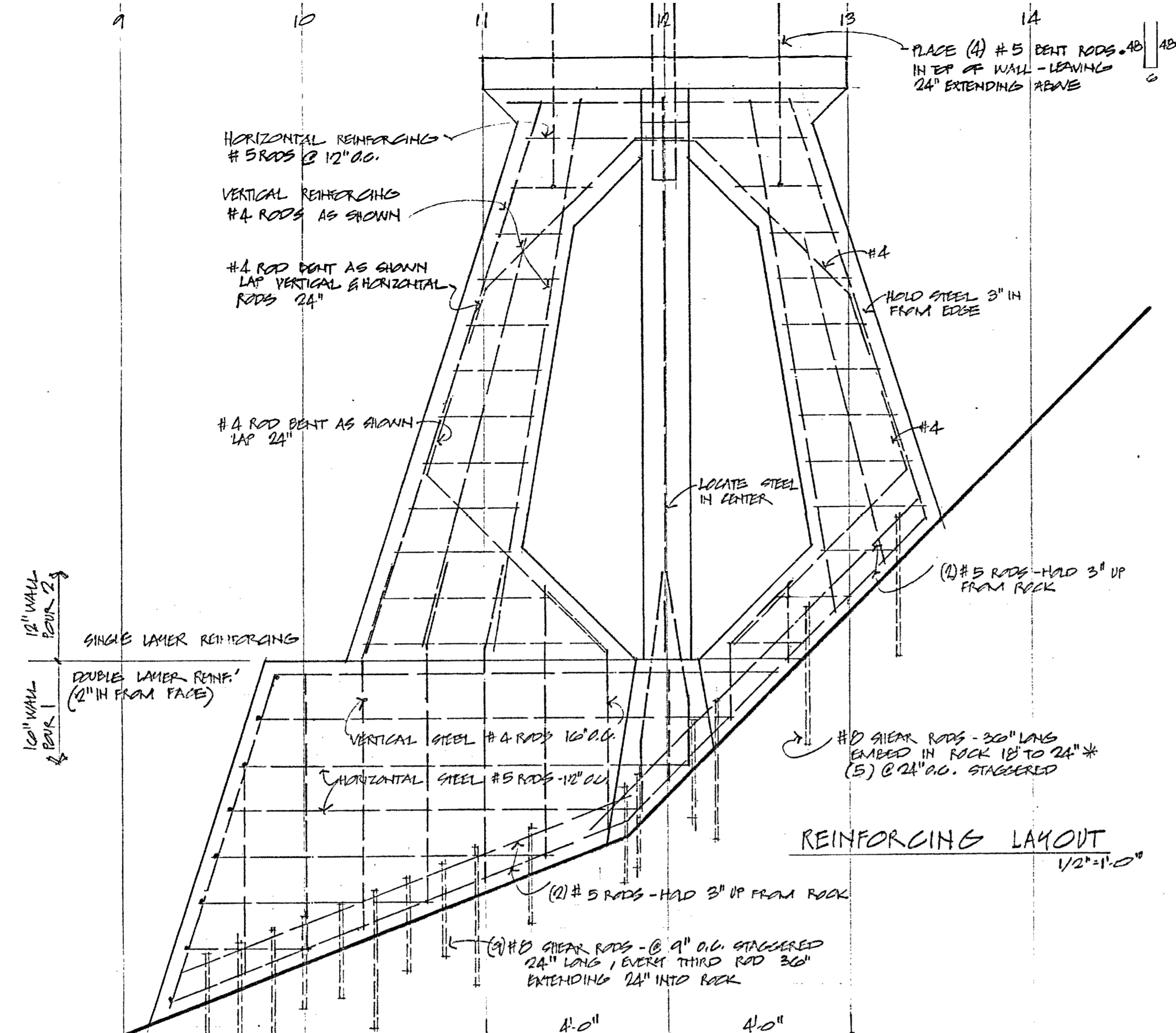
JOINT. 26

JOINT. 26

JOINT. 27

JOINT. 2





GENERAL NOTES:

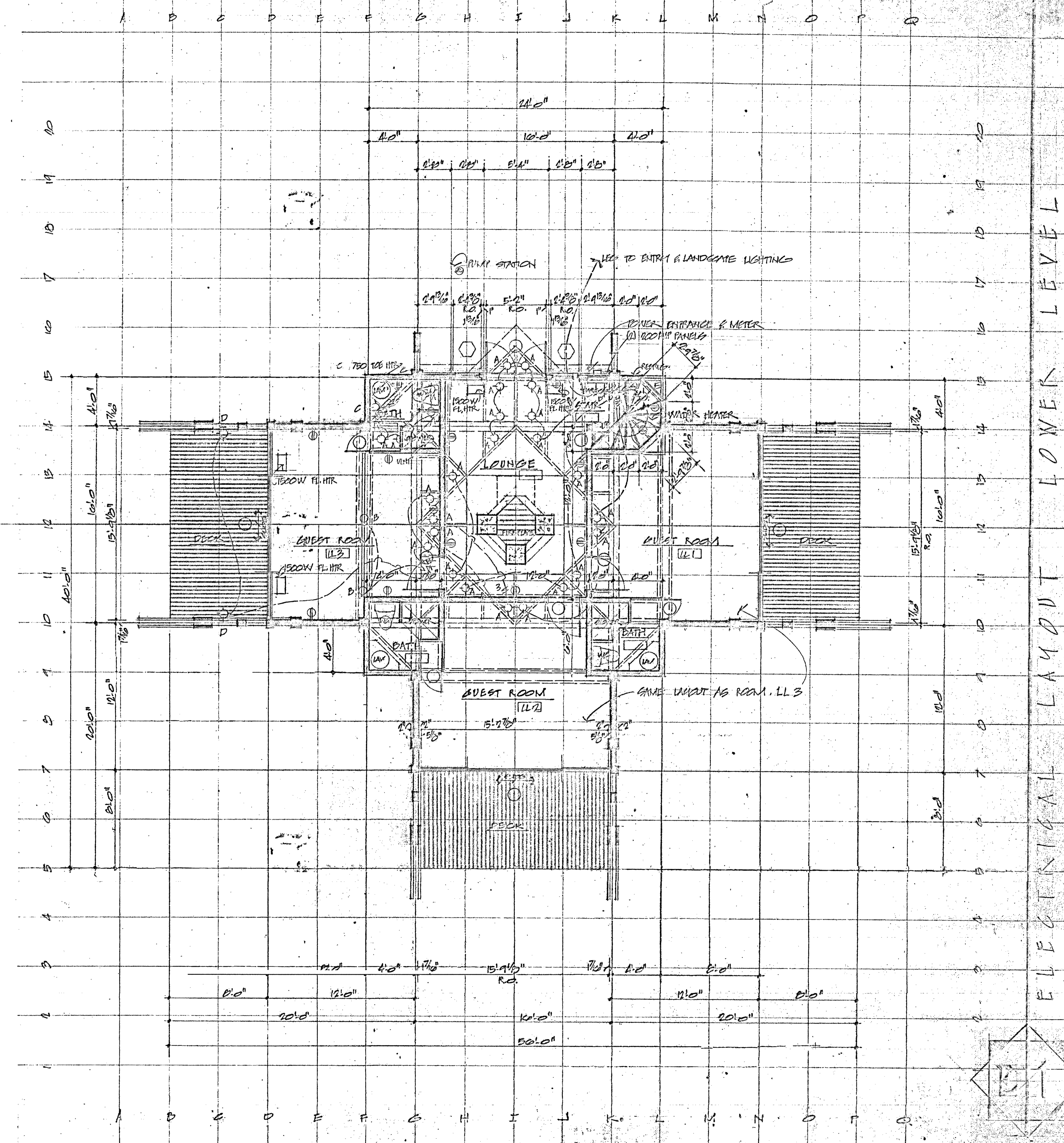
A. EACH GUEST QUARTERS SHALL HAVE THE FOLLOWING EQUIPMENT

1. GUEST ROOM
 - (1) BUILT-IN CEILING LIGHTING (2) - FIXTURES "A" & B
 - (2) CONVIENCE DUPLEX
 - (2) IN FLOOR FORCED AIR HEATERS - 1500W
2. BATH
 - BUILT-IN CEILING LIGHTING (2) - FIXTURES "A"
 - WALL LIGHTS (2) - FIXTURES "B"
 - (1) TOE SPACE HEATER 1750 W
 - (1) CEILING VENT -
3. DECK
 - (2) EXTERIOR WALL MOUNT LIGHTS - FIXTURES "D"

B. LOUNGE AREA SHALL HAVE THE FOLLOWING EQUIPMENT

1. LOUNGE
 - BUILT-IN CEILING LIGHTING (3) FIXTURES "A"
 - (2) CONVIENCE DUPLEX OUTLETS
 - (2) IN FLOOR FORCED AIR HEATERS - 1500 W
2. STAIR/BAR
 - BUILT-IN LIGHT FIXTURE "E"
 - (1) CONVIENCE DUPLEX OUTLET
 - (1) OUTLET - ICE MAKER/REFRIGERATOR
 - (1) 220 OUTLET - WATER HEATER 5500 W

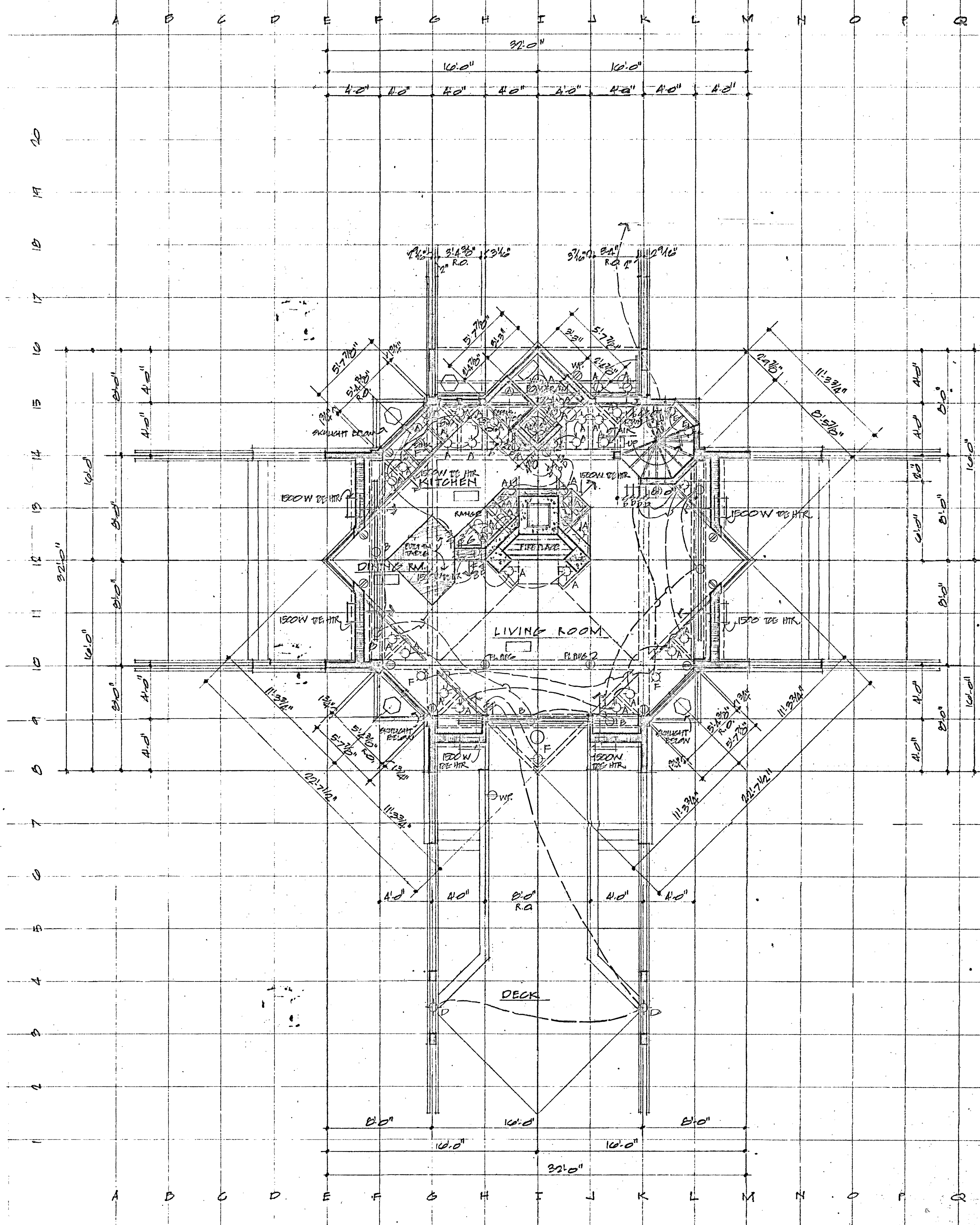
3. EXTERIOR
PROVIDE SWITCH LEGS, LIGHTING TO BE DETERMINED ON JOB
OUTLET FOR SEWAGE PUMP STATION



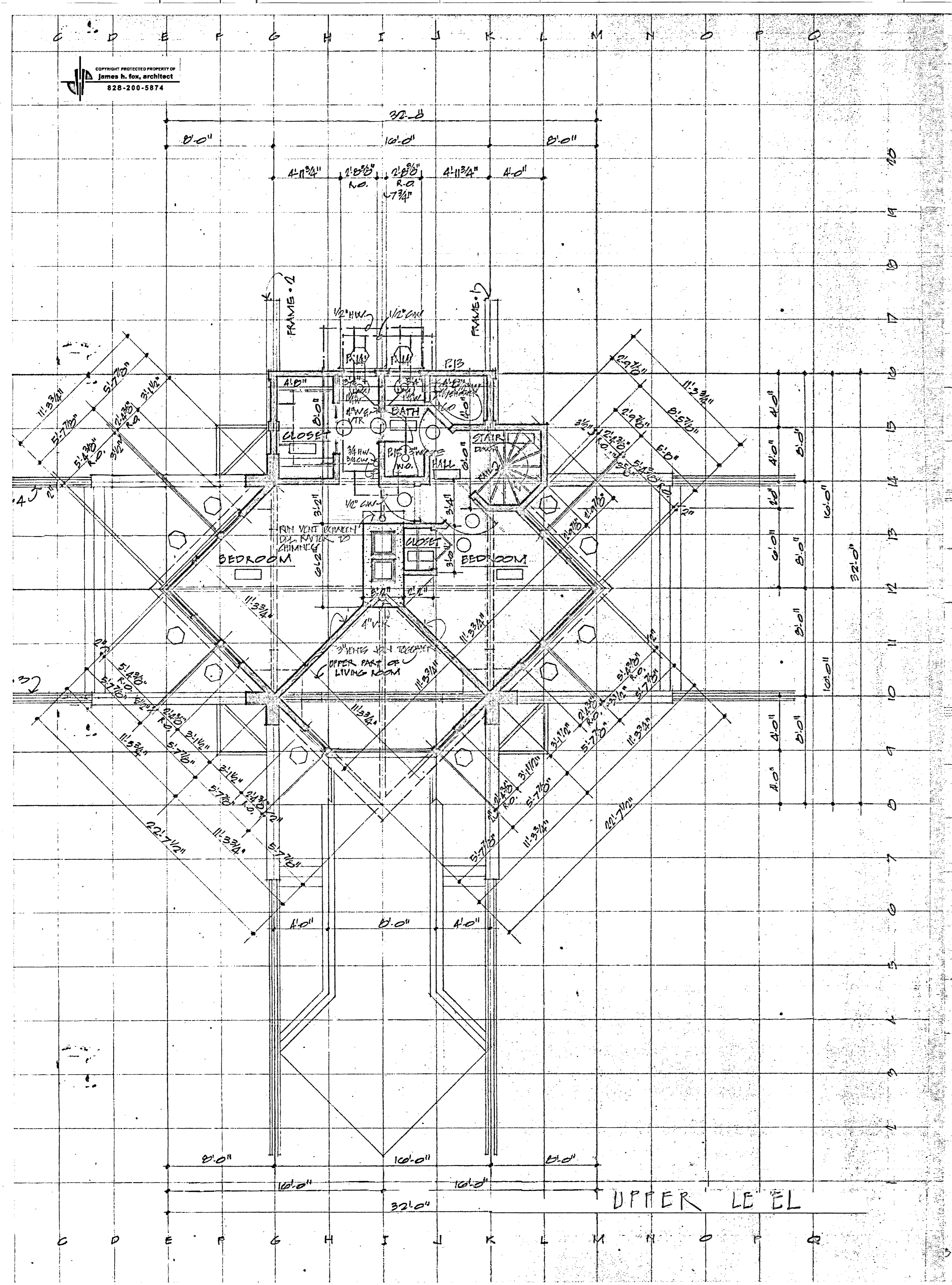
ELECTRICAL LAYOUT LOWER LEVEL

GENERAL NOTES:

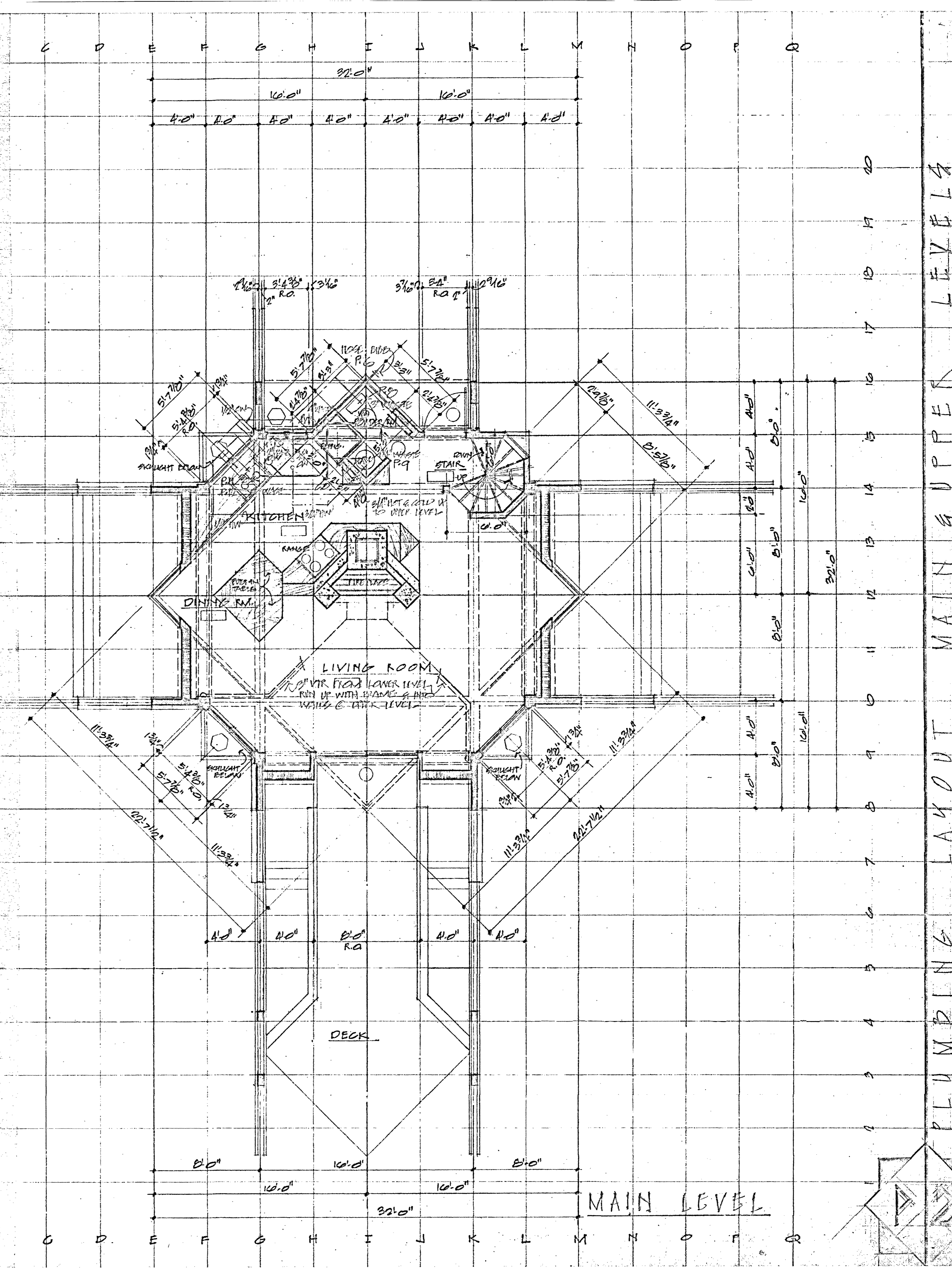
- A. EACH AREA AS LISTED SHALL HAVE THE FOLLOWING EQUIPMENT
1. ENTRY / STAIR
 - BUILT-IN CEILING LIGHTS (2) FIXTURES "A"
 - BUILT-IN WALL LIGHTS - FIXTURE "E"
 - PROVIDE SWITCH LES TO EXTERIOR LIGHTING
 - (1) CONVENIENCE DUPLEX OUTLET
 - (1) TEE SPACE HEATER - 1500W
 - (1) W.P. OUTLET
 2. POWDER ROOM
 - BUILT-IN CEILING LIGHTS - FIXTURES "A"
 - (1) CEILING VENT
 - (1) TEE SPACE HEATER - 750W
 3. LIVING ROOM
 - BUILT-IN CEILING LIGHTS (3) FIXTURES "A"
 - DINING ROOM
 - BUILT-IN CEILING LIGHTS (1) FIXTURES "B"
 - CEILING BRACKET LIGHTS - (1) FIXTURES "F"
 - (10) CONVENIENCE DUPLEX OUTLETS
 - (2) FLOOR OUTLETS
 - (6) TEE SPACE HEATERS - 1500W
 4. KITCHEN
 - BUILT-IN CEILING LIGHTS (2) FIXTURES "A"
 - CEILING BRACKET LIGHT (1) FIXTURE "F"
 - UNDER CABINET LIGHT (1) FIXTURE "G"
 - SPECIAL OUTLETS - DISPOSAL
REFRIGERATOR
RANGE 220
DISH WASHER
 - (3) CONVENIENCE DUPLEX OUTLETS
 - (3) TEE SPACE HEATERS - 1500W
 5. DECK
 - CEILING BRACKET LIGHT (1) - FIXTURE "E"
 - EXTERIOR WALL MOUNT LIGHTS - FIXTURE "D"
 - (1) W.P. OUTLET



ELECTRICAL LAYOUT MAIN LEVEL

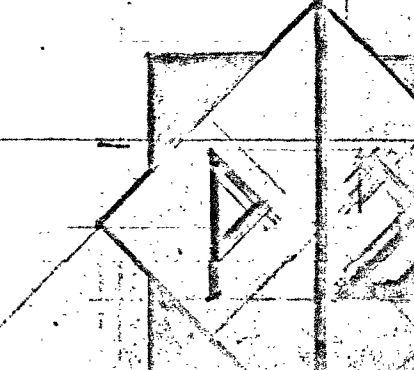


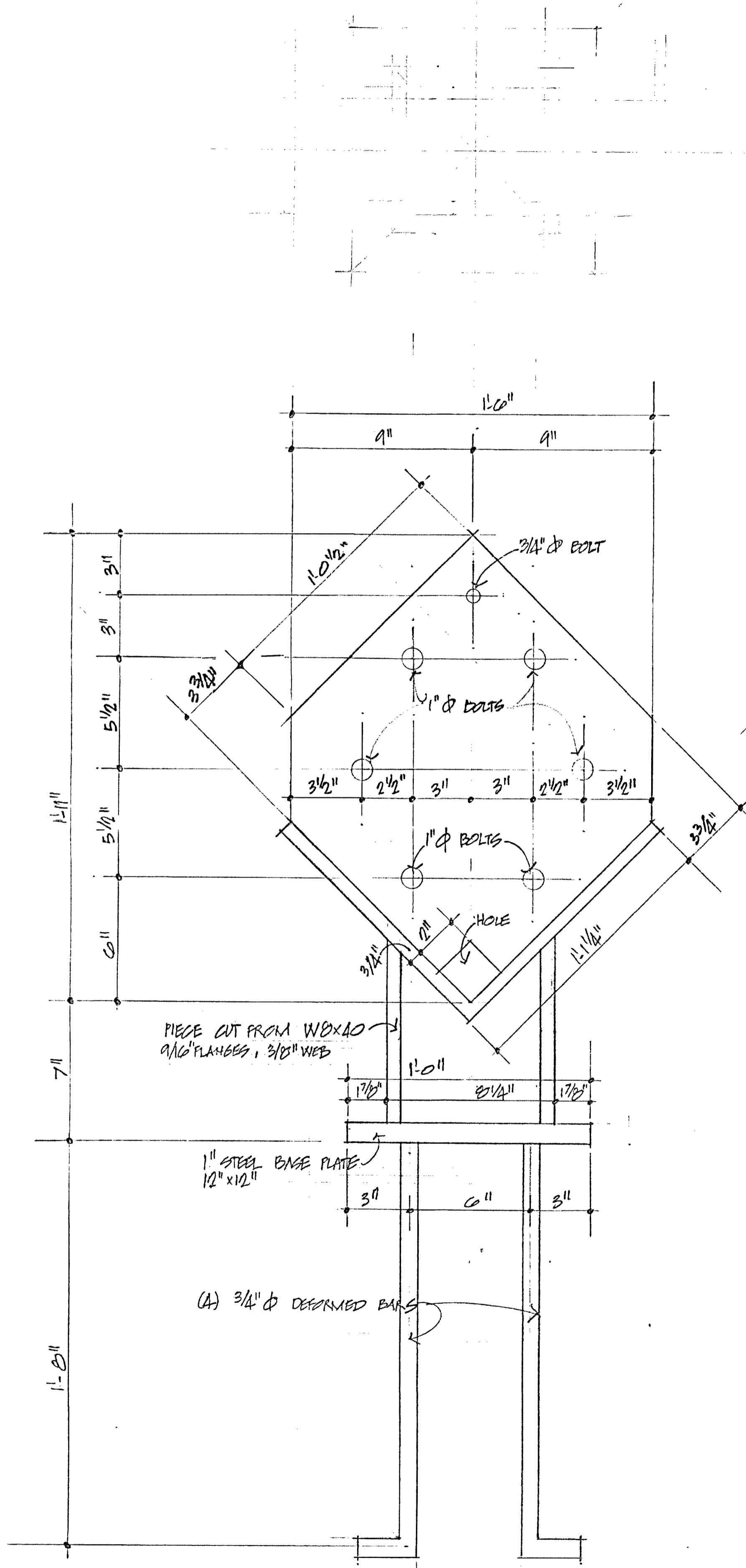
UPPER LEVEL



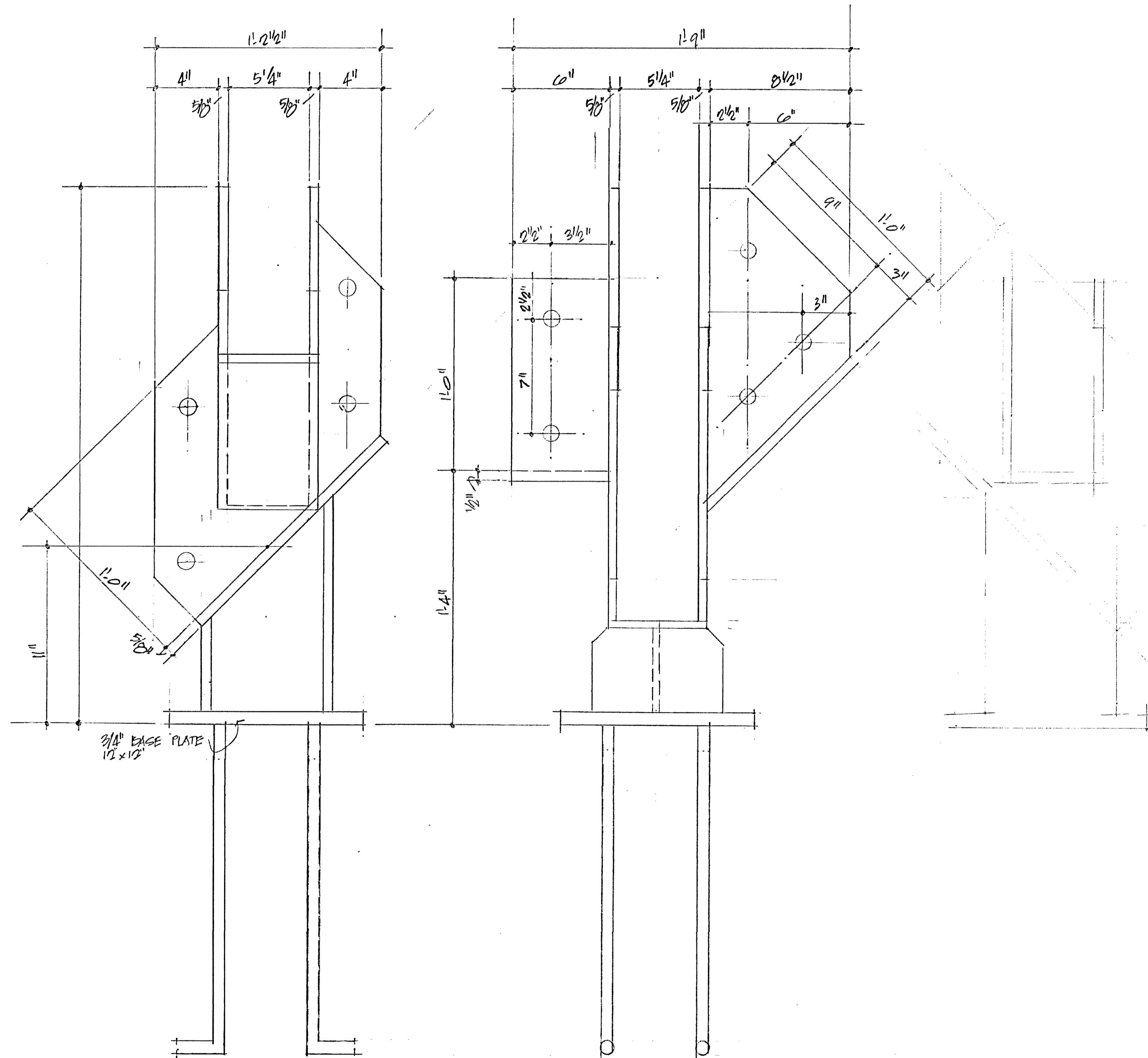
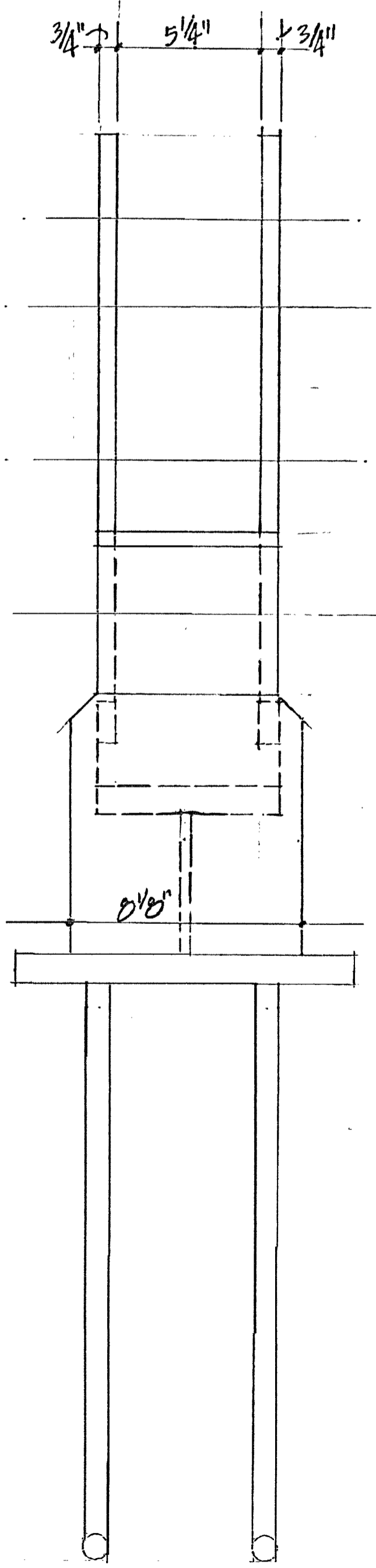
MAIN LEVEL

PLUMBING LAYOUT MAIN & UPPER LEVELS

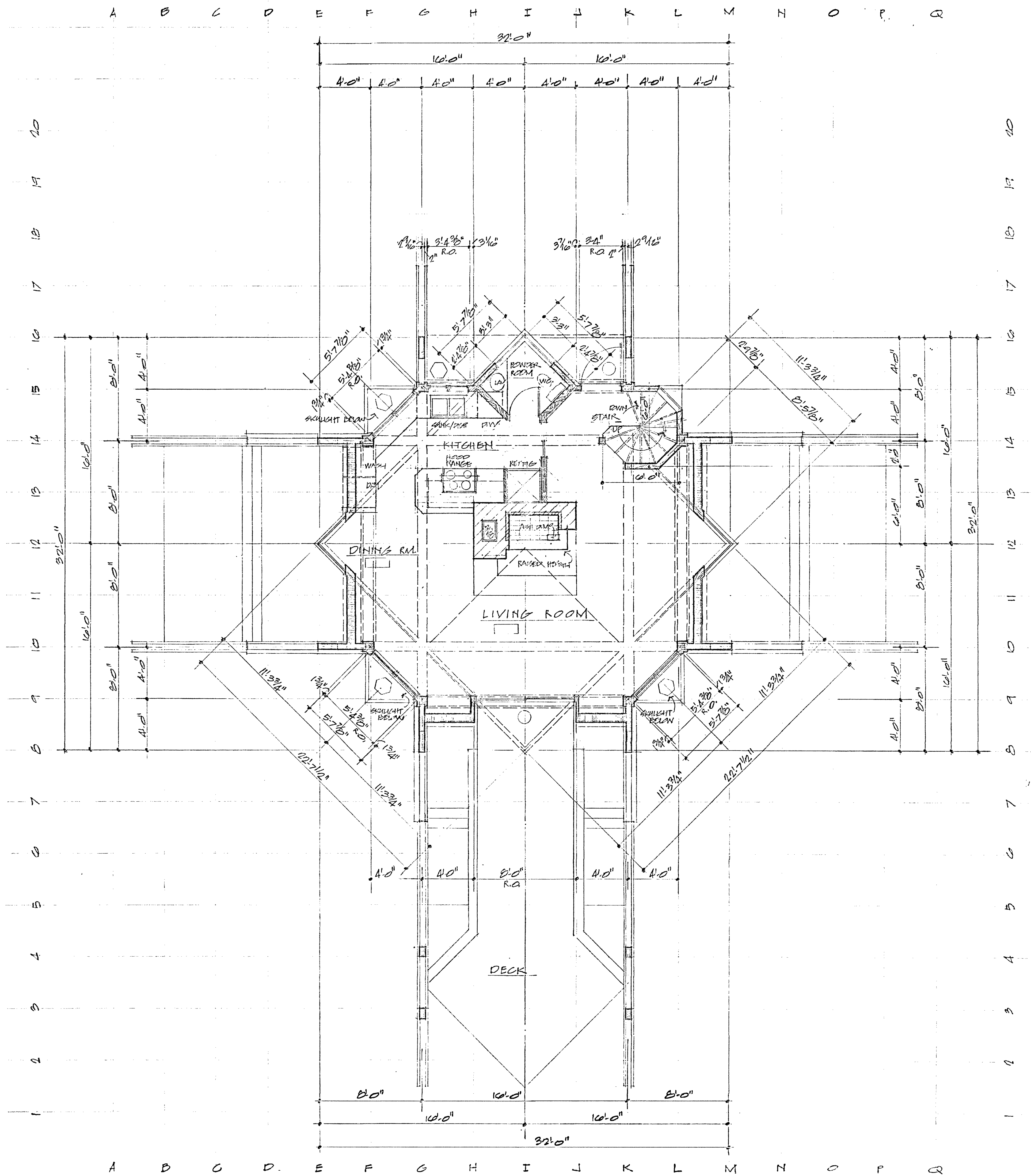




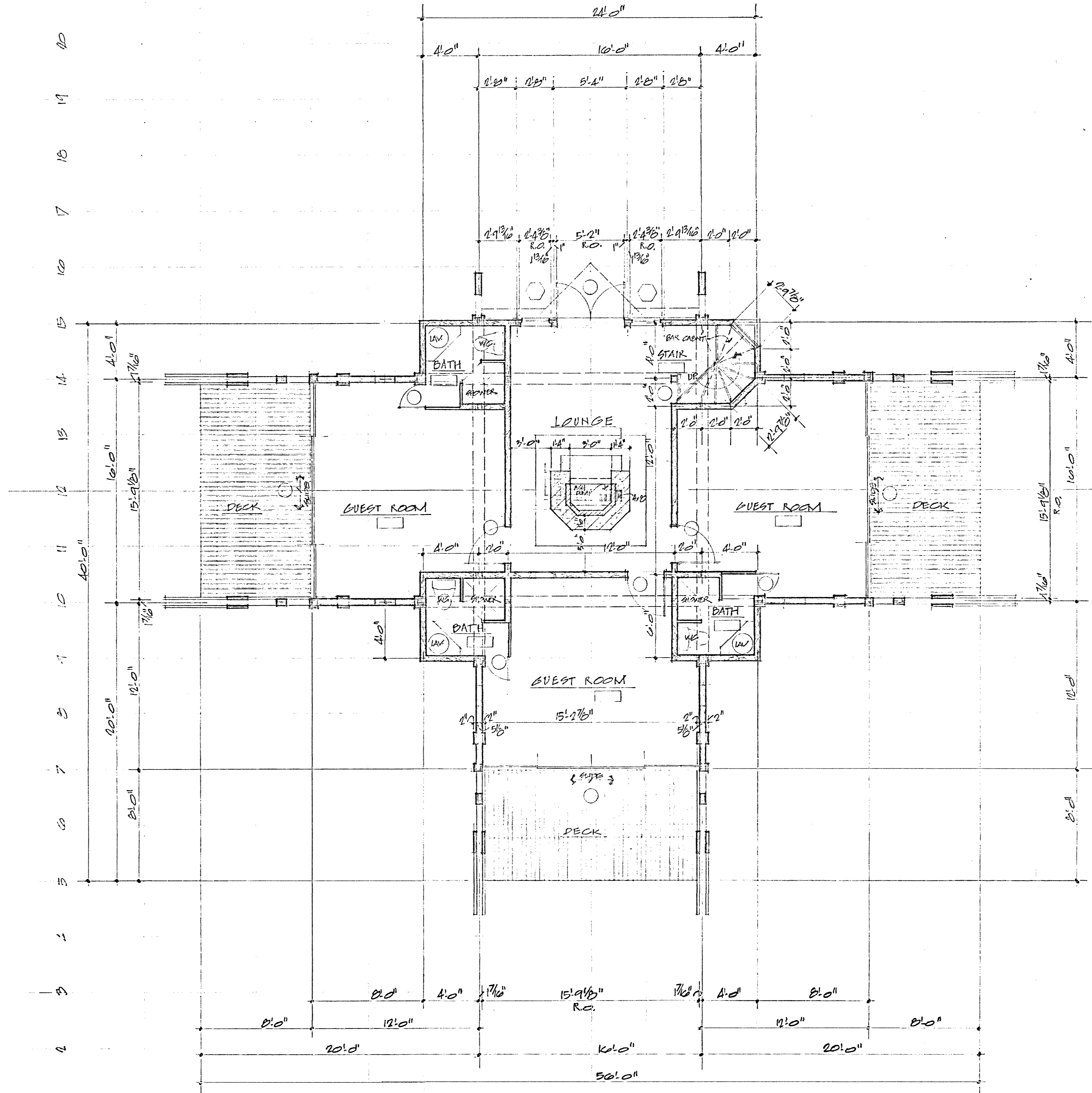
FRAME SEAT "A" - (3) REQUIRED
 ALL ANGLES ARE 90°/45°



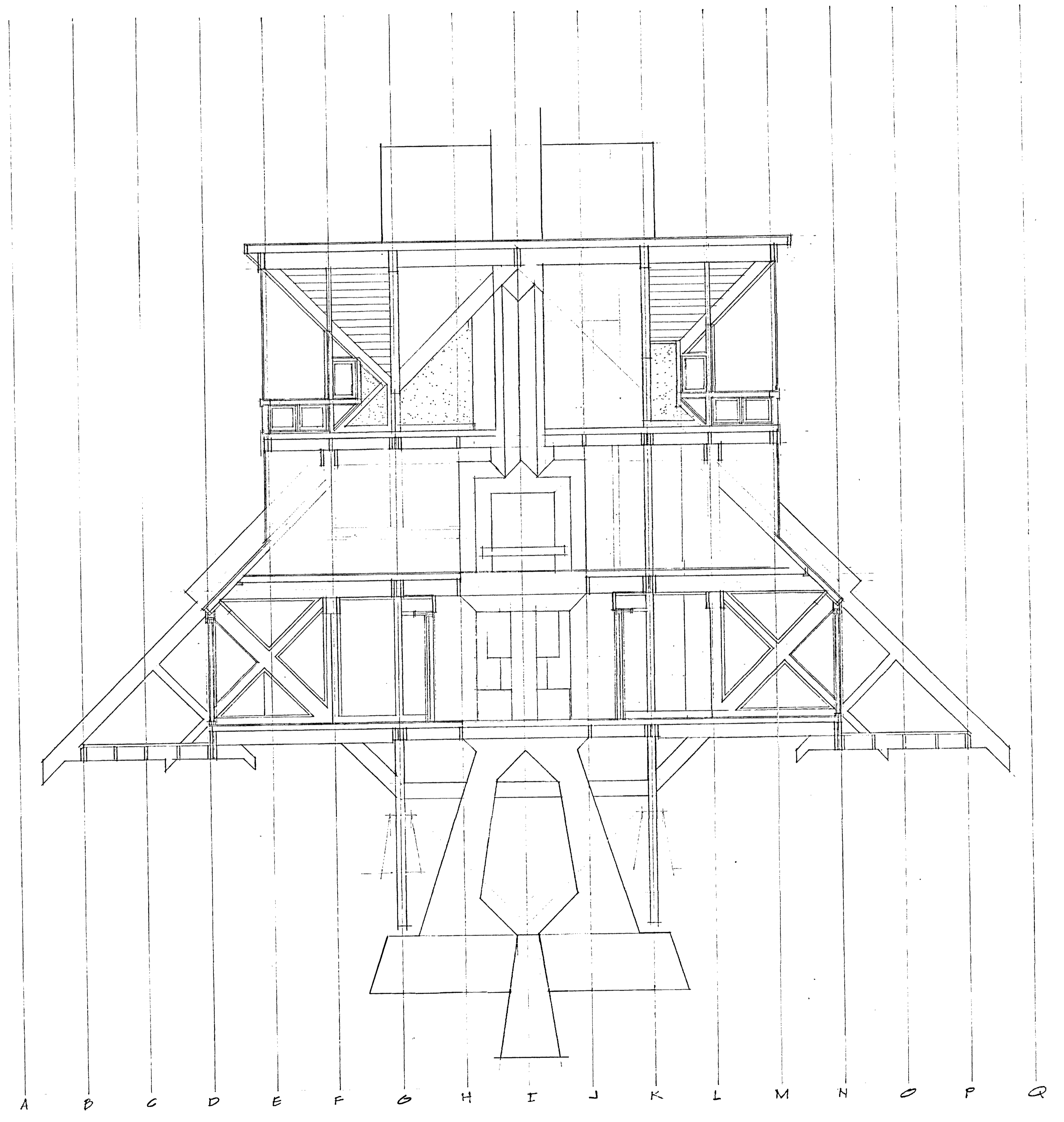
FRAME SEAT "B" - (1) LIKE THIS & (1) REVERSE

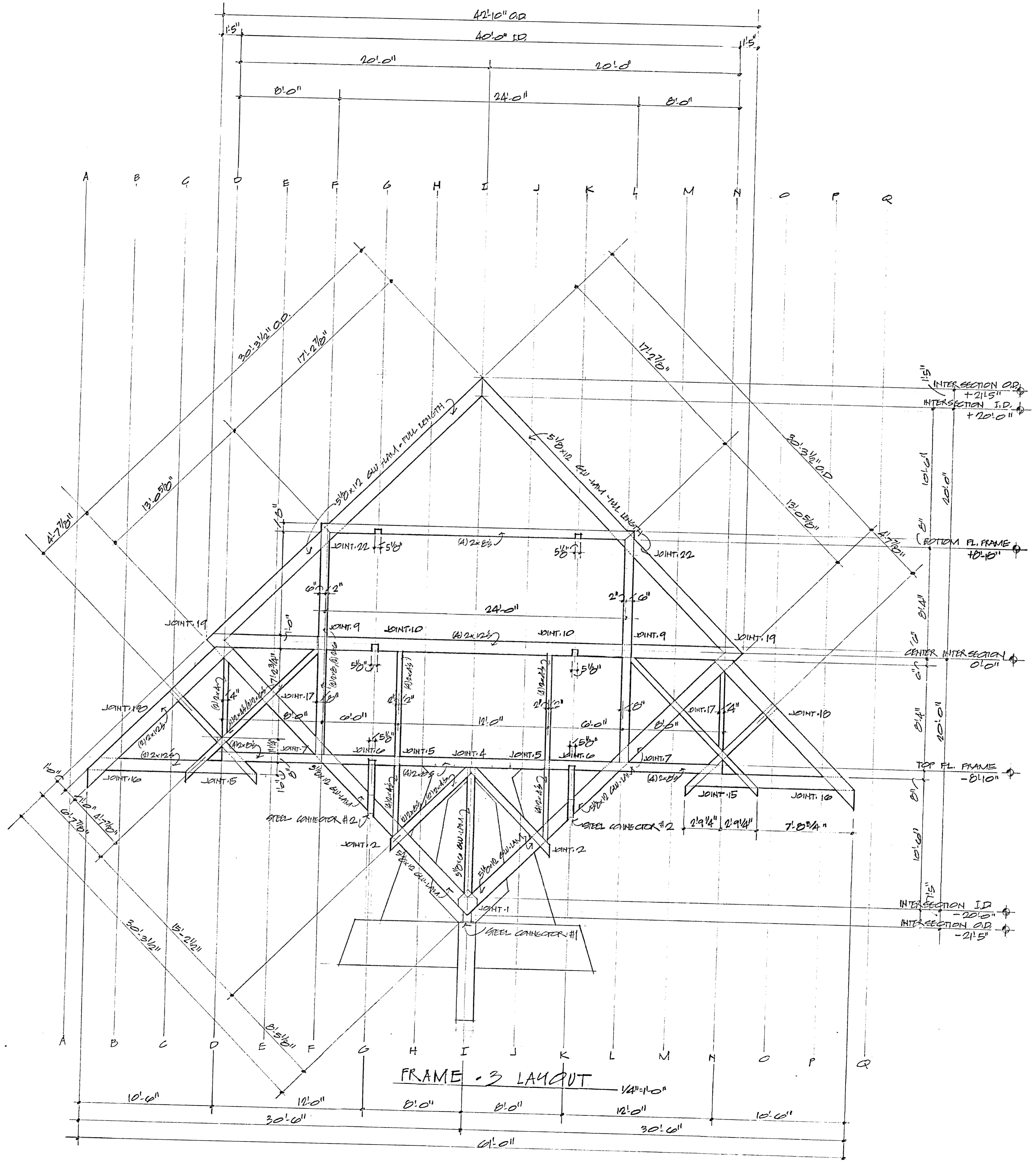


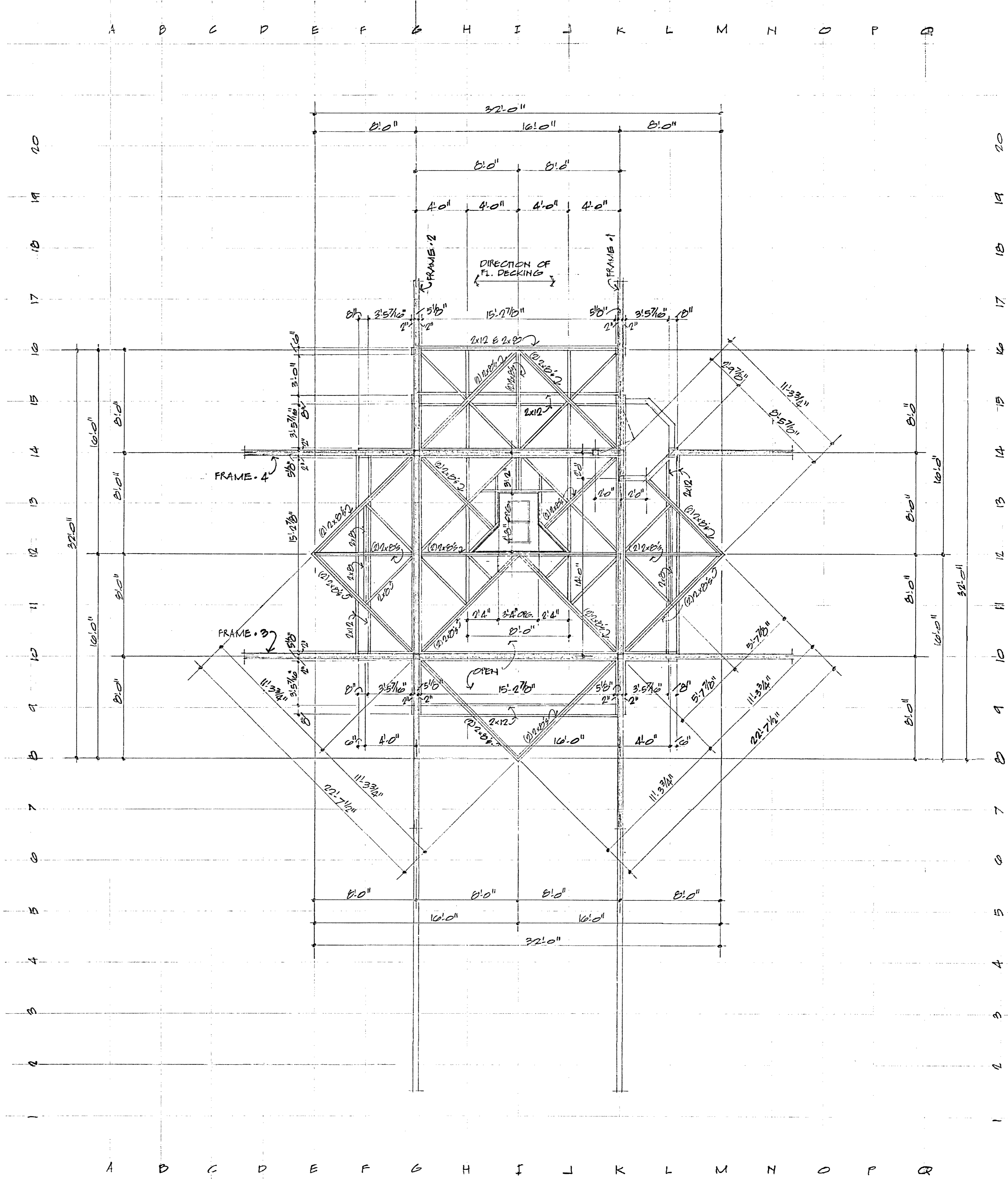
A B C D E F G H I J K L M N O P Q



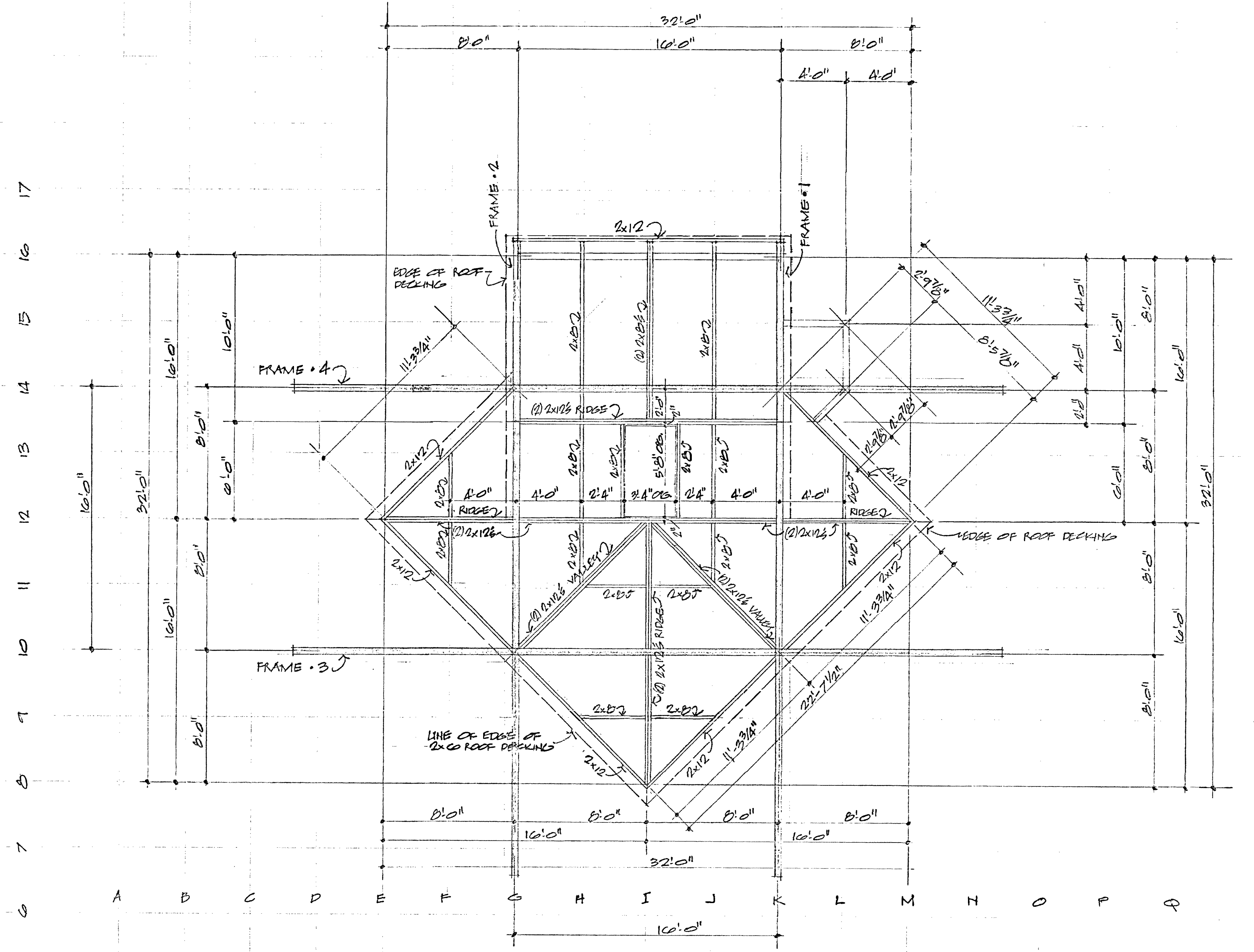
A B C D E F G H I J K L M N O P Q







A B C D E F G H I J K L M N O P Q



6 7 8 9 10 11 12 13 14 15 16 17

